



Xitanium/Fortimo LED Drivers Indoor

Xitanium 40W 0.28A 142V 230V

The new Fortimo and Xitanium electronic LED drivers are specially designed to operate LED solutions for general lighting applications. There are Xitanium LED driver versions in 17W / 24V, 25W / 36V and 45W / 80V. There are fixed-output and dimmable (trailing edge and Touch & DALI) versions. The high output voltage (up to 80V) and adjustable output current (200 to 700mA) enable operation of many LEDs (high light output) and flexibility in LED fixture design. The output current can be set by placing a resistor on your LED PCB (Level 2 board). The new housing design incorporates three different mounting options: independent, screw and click mounting. The 25W and 45W versions also feature a 12V output to operate active cooling or decorative LED light effects. The Xitanium LED driver 45W/80V is available in fixed-output version in an independent housing.

Product data

General Information			
Number of Products on MCB (16A Type B) (Max)	24	Output Current Tolerance (Min)	-8 %
Operating and Electrical		Input Voltage (AC)	220-240 V
Input Frequency	50 to 60 Hz	Earth Leakage Current (Max)	0.7 mA
Mains voltage operation (DC)	168-275 V	Open Circuit Voltage (DC) (Max)	300 V
Total Harmonic Distortion IEC (Max)	30 %	Input Current (Nom)	250 mA
12V Output	No	Input current (DC)	0.3 A
Output Current Ripple (Max)	20 %	Input Voltage (DC)	186-250 V
Maximum Efficiency	88 %	Input Power (Nom)	47 W
Power Factor 100% Load (Min)	0.9	Inrush Current Peak (Max)	22 A
Output Current (Max)	280 mA	Output Power (Max)	40 W
Output Current (Nom)	280 mA	Output Power (Nom)	32.5 W
Output Current Tolerance (Max)	5 %	Output Voltage	120-138 V
		Default output current	280 mA
		Inrush Current Width to 50% of Peak	250 µs

Xitanium/Fortimo LED Drivers Indoor

Energy Metering	False
Constant Current (CC)	True
Constant Voltage (CV)	False
Diagnostics	False

Wiring

Connector Type Input Terminals	Wago 744
Hot Wiring	No
Connector Type Output Terminals	Wago 744
Output Wire Cross Section (Max)	1.5 mm ²
Output Wire Cross Section (Min)	0.5 mm ²
Cable Length From Device to Lamp	0.24 m
Input wire strip length	8-9 mm
Output wire strip length	8-9 mm
Input Wire Cross Section (Max)	1.5 mm ²
Input Wire Cross Section (Min)	0.5 mm ²

Temperature

T-Ambient (Max)	50 °C
T-Ambient (Min)	-20 °C
T-Storage (Max)	85 °C
T-Storage (Min)	-25 °C
T-Case Lifetime (Nom)	75 °C
T-Case Maximum (Max)	75 °C
Maximum case temperature (in case of failure)	110 °C

Controls and Dimming

Dimmable	No
Control Interface	None
Control Input Protection	Yes (Basic insulation)

Mechanical and Housing

Housing	L280x30x22
---------	------------

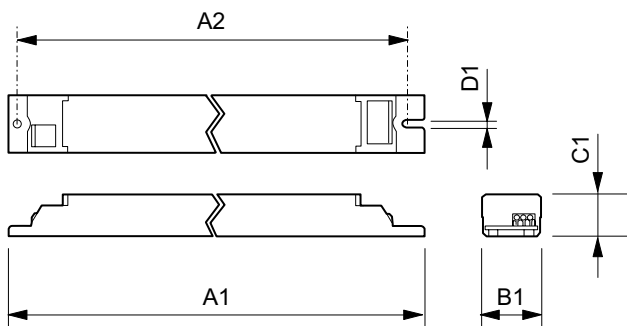
Approval and Application

Surge Protection (Common/Differential)	EN61547 (L-L 1kV, L-G 2kV) kV
Relative Humidity (Operation) (Max)	90 %
Relative Humidity (Operation) (Min)	10 %
Relative humidity (storage)	5...95 %
IP Classification	20
Isolation Classification	Class I
Short Circuit Protection	Protected
Over Power Protection	Protected
Open Circuit Protection	Protected
Approval Marks	CE marking ENEC certificate CCC certificate
Corridor Mode	False
Output Current Set Options	No

Product Data

Full product code	871829121318500
Order product name	Xitanium 40W 0.28A 142V 230V
EAN/UPC - Product	8718291213185
Order code	929000805103
Numerator - Quantity Per Pack	1
Numerator - Packs per outer box	12
Material Nr. (12NC)	929000805103
Net Weight (Piece)	0.182 kg

Dimensional drawing



Xitanium 40W 0.28A 142V 230V

Product	D1	A2	C1	A1	B1
Xitanium 40W 0.28A 142V 230V	4.1 mm	265.0 mm	22.0 mm	280.0 mm	30.0 mm

Xitanium/Fortimo LED Drivers Indoor

