



Fortimo LED strip system

Xitanium 75W/0.15-0.4A 200V TD 230V

In today's rapidly changing office market, demand is increasing for scalable, energy-efficient LED lighting solutions that enhance the workspace, supporting both staff well-being and corporate image. In this evolving environment, luminaire manufacturers want a component that offers fluorescent replacement solutions and that will allow them to create slender, seamless light-lines that do not compromise on the light quality their customers are used to. Fortimo LED Strip is a sleek linear LED array with a fixed form factor and consistent high-quality white light – making it possible to create new slimline designs that go beyond traditional fluorescent office applications. Supported with a state-of-the-art Xitanium driver, it is easy to design-in, enabling fast luminaire creation. And because this energy-efficient system is scalable and upgradable, it offers a truly future-proof solution.

Product data

• General Characteristics

| | |
|------------------------------|-------------------------|
| Housing | - [Not Specified] |
| Input Frequency | 50/60 Hz |
| Relative Humidity | 95 % |
| IP Classification | 20 |
| Lifetime 90% surv.@Tcaselife | 50000 hr |
| System Description | TD [Touch&DALI dimming] |

• Operating Characteristics

| | |
|--------------------------------|---------------------|
| 12V output | No |
| Ripple current | 20 % |
| Efficiency Range | 89-92 % |
| Output Power Range | 21-70 W |
| Power Factor (100% load) | 0.9 - |
| Output Voltage Range | 100-200 V |
| Output Current Range (mA) | 150-400 |
| Dimming range | 100-13 % |
| Input Voltage Range (DC) | 186-250 V |
| Inrush Current Peak | 48 (max) A |
| Output Current Tolerance | -5 (min), 5 (max) % |
| Inrush Current Width to 50% | 180 us |
| Type of Dimming | Touch&DALI |
| Input Voltage Range (AC) | 220-240 V |
| Earth leakage current | 0.7 (max) mA |
| Max drivers on MCB(16A type-B) | 20 (max) x |

• Wiring Characteristics

| | |
|-------------------------------|---------------|
| Connection on driver to L2 | JST connector |
| Hot wiring | Yes |
| Connector type input terminal | Wago 251 |

• Temperature Characteristics

| | |
|-----------|-----------------------|
| T-ambient | -20 (min), 50 (max) C |
| T-Storage | -25 (min), 85 (max) C |

• Product Dimensions

| | |
|--------------------------------|---------|
| Length A1 | 360 mm |
| Width B1 | 30.0 mm |
| Height C1 | 22.0 mm |
| Fixing Hole Diameter D1 | 4.1 mm |
| Fixing Hole Distance Length A2 | 350 mm |

• Approval&Application Chars

| | |
|--------------------------|---------|
| Isolation classification | Class I |
| ENEC certificate | Yes |
| CE marking | Yes |

• Product Data

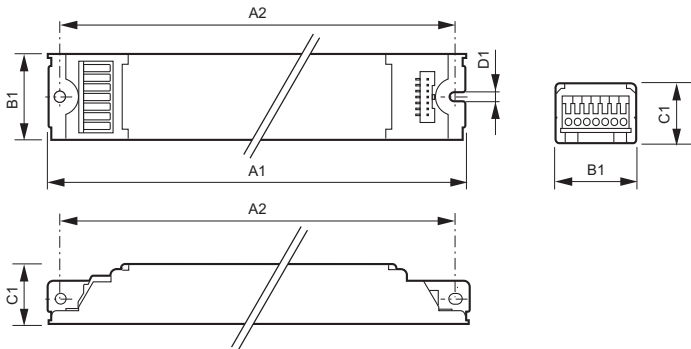
| | |
|--------------------|-------------------------------------|
| Order code | 168188 00 |
| Full product code | 871829116818800 |
| Full product name | Xitanium 75W/0.15-0.4A 200V TD 230V |
| Order product name | Xitanium 75W/0.15-0.4A 200V TD 230V |
| Pieces per pack | 1 |

Fortimo LED strip system

Packing configuration 12
 Packs per outerbox 12
 Bar code on pack - EAN1 8718291168188
 Bar code on outerbox - EAN3 8718291168195

Logistic code(s) - 929000670403
 12NC
 Net weight per piece 0.295 kg

Dimensional drawing



Xtitanium 17W TD

| Product | A1 (Norm) | A2 (Norm) | A3 (Norm) | A4 (Norm) | B1 (Norm) | B2 (Norm) | C1 (Norm) | D1 (Norm) |
|--------------------------------------|-----------|-----------|-----------|-----------|-----------|-----------|-----------|-----------|
| Xtitanium 75W/0.15-0.4A 200V TD 230V | 360 | 350 | - | - | 30.0 | - | 22.0 | 4.1 |



© 2012 Koninklijke Philips Electronics N.V.
 All rights reserved.

Specifications are subject to change without notice. Trademarks are the property of Koninklijke Philips Electronics N.V. or their respective owners.

www.philips.com/lighting

2012, September 10
 data subject to change